

# Guilford

WaterSOUND<sup>®</sup>  
ORIGINS

**By Romair Homes**

4 Bedrooms ■ 4 Baths ■ 2,610 Sq Ft Conditioned  
377 Sq Ft Combined Porches ■ 2-Car Garage

[watersound.com](http://watersound.com)

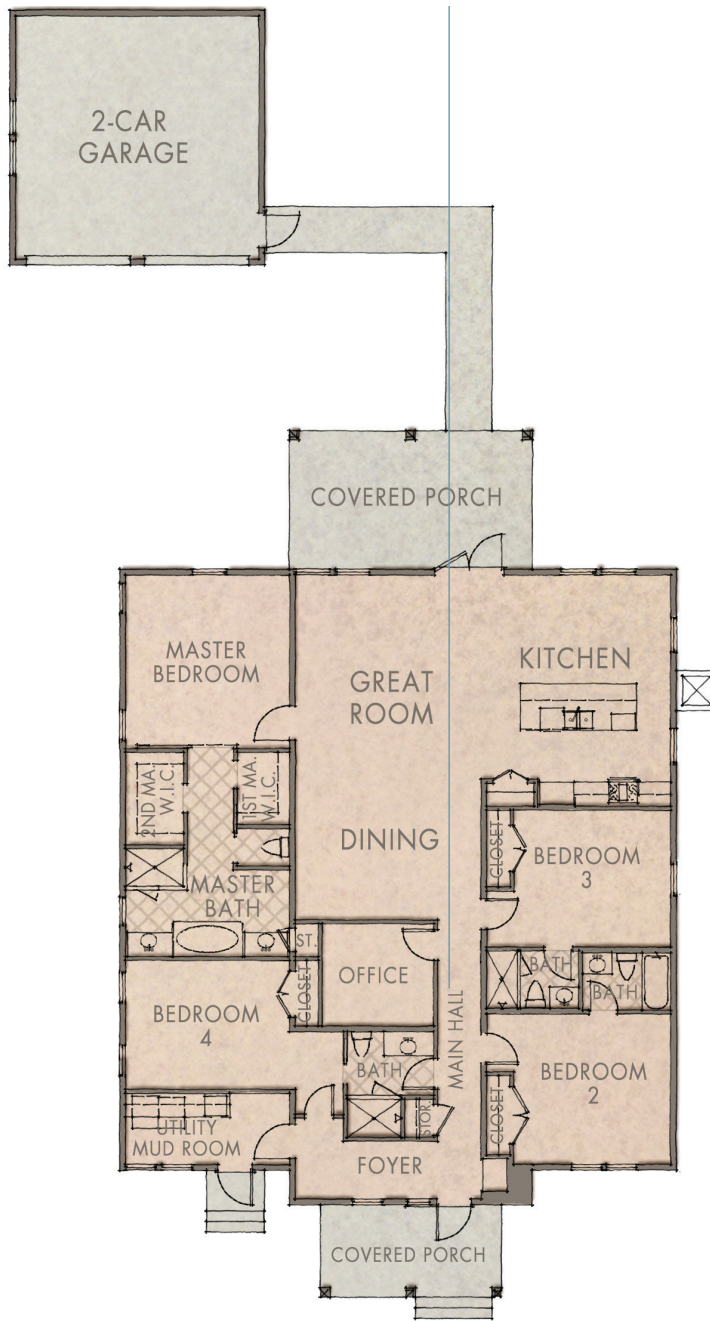
1.866.505.2091



FRONT VIEW



REAR VIEW



**GUILFORD** **WATERSOUND.COM**

- 2,610 Sq Ft Conditioned
- 377 Sq Ft Combined Porches
- 2-Car Detached Garage
- **Great Room:** 32'6" x 20'
- **Master Bedroom:** 14'2" x 15'
- **Bedroom 3:** 13'10" x 13'7"
- **Bedroom 4:** 11' x 14'2"
- **Bedroom 2:** 11'10" x 13'7"



“Watersound Origins” and its logo are service marks of The St. Joe Company. The materials and features and amenities described and depicted herein are based upon current development plans, which are subject to change without notice. Room dimensions and square footages are approximations. This does not constitute an offer to sell real property in any jurisdiction where prior registration or other advance qualifications of real property is required, including New York. Void where prohibited by law. Equal Housing Opportunity. St. Joe Club & Resorts is a private club, membership in which permits Watersound Origins owners the use of facilities designated by the Club. Use of additional Club Facilities requires purchase of a separate membership upgrade. Club membership may be subject to application and acceptance, payment of fees, membership requirements, rules or other limitations, all of which are subject to change. Club Facilities are also available to other club members and persons who stay in rental program residences. Romair Homes is an independent, third party not affiliated with The St. Joe Company. The St. Joe Company does not guarantee the obligations of, nor provide any warranties for unaffiliated parties who build homes in the Watersound Origins community. Obtain the Property Report required by Federal Law and read it before signing anything. No federal agency has judged the merits or value, if any, of this property.