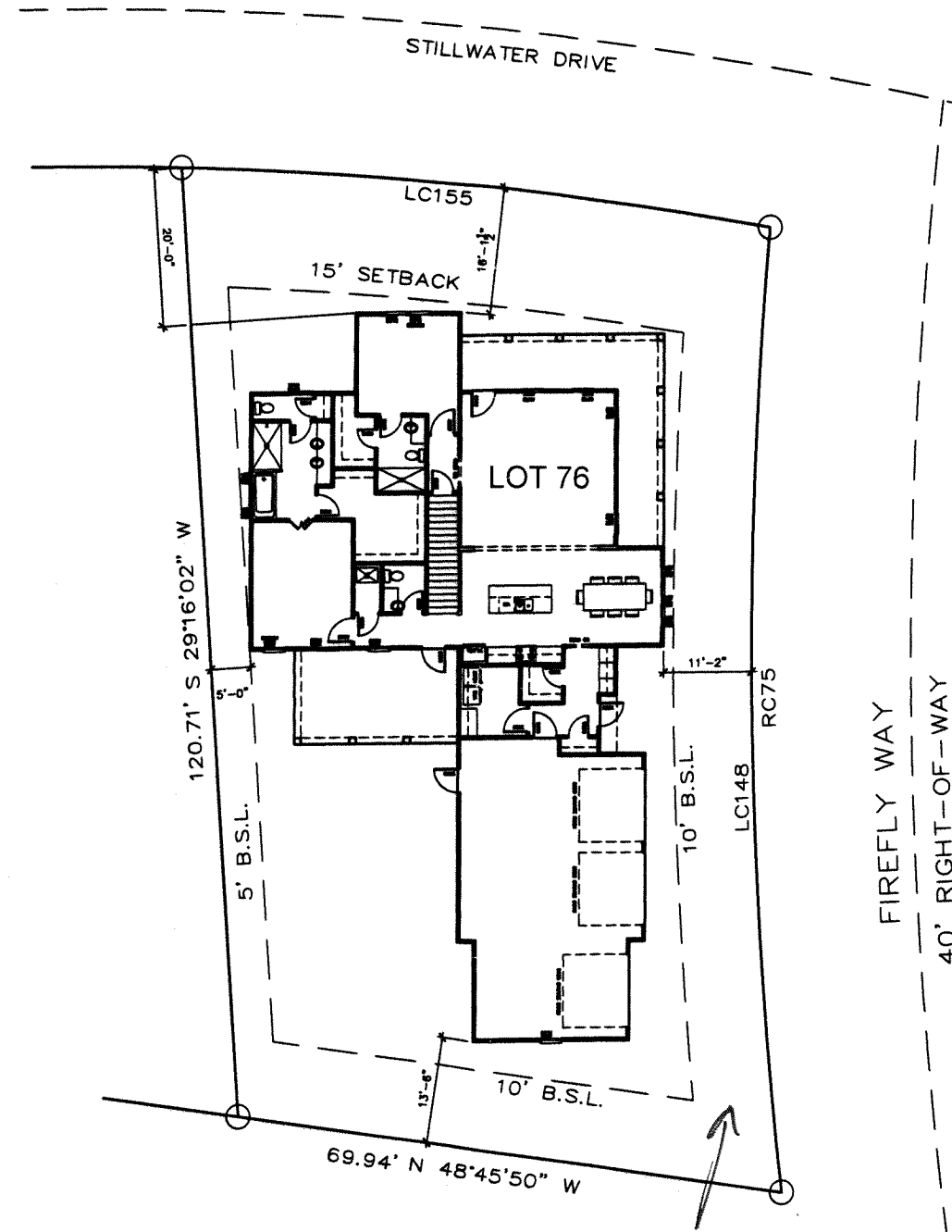


FLOOD ZONE - X  
 # 24-35-18-16100-000-0760



FFE - 35.49'

10 FT UTILITY EASEMENT



SQUARE FOOTAGE:

1ST FLOOR :	1970 S.F.
2ND FLOOR :	745 S.F.
TOTAL H&C :	2715 S.F.
GARAGE :	845 S.F.
COVERED PORCHES :	575 S.F.
TOTAL AREA :	4,135 S.F.

INDEX TO DRAWINGS:

SHT. NO.	DWG. NO.	SCALE	DESCRIPTION
1	A1	1"=10'	SITE PLAN / INDEX TO DRAWINGS
2	A2	1/4"	FIRST FLOOR PLAN
3	A3	1/4"	SECOND FLOOR PLAN
4	A4	1/4"	EXTERIOR ELEVATIONS
5	A5	1/4"	EXTERIOR ELEVATIONS
6	S1	N/A	STRUCTURAL NOTES & DETAILS
7	S2	N/A	STRUCTURAL NOTES & DETAILS
8	S3	N/A	STRUCTURAL NOTES & DETAILS
9	S4	N/A	FOUNDATION PLAN &
10	S5	N/A	ROOF FRAMING PLAN

*[Signature]*  
 5-12-15



**BART MILLER**  
 SANTA ROSA BEACH, FLORIDA  
 PH: 850.438.1002 FAX: 850.267.3118

**Gulf Coast Engineering**  
 Commercial and Residential Design  
 P.O. Box 4815 Fort Meigs, Santa Rosa Beach, Florida 32543  
 callen18@cox.net Elliott Allen, P.E.  
 mshenwell@cox.net Michael Newell, FE, FL Reg. No. 41126  
 Cell: 850-865-0898 FL CA# 7066

DATE:	REVISION DATE:
DESIGNED BY: BART MILLER	
DRAWN BY: BART MILLER	
CHECKED BY: GCE	

LOT 76  
 PATHWAYS  
 SANTA ROSA BEACH, FLORIDA

SHEET NO.  
**A1**

PROPRIETARY RIGHTS CLAUSE: INFORMATION AND DATA CONTAINED ON THIS DRAWING IS CONFIDENTIAL AND SHALL NOT BE USED WITHOUT PRIOR WRITTEN PERMISSION BY ANY ENTITY NOT HAVING A CONTRACTUAL RELATIONSHIP WITH THE DESIGNER. THIS LEGEND SHALL BE MARKED ON ANY REPRODUCTIONS IN WHOLE OR IN PART. STUDIO NETTUNO © COPYRIGHT 2008

31'-0" TOP OF RIDGE  
 21'-8" 2ND FL. CL.HT.  
 8'-0" AFF WINDOW HOR.  
 12'-8" 2ND FL. HD.  
 10'-0" TOP PLATE  
 8'-0" AFF WINDOW HOR.  
 0'-0" TOP OF BLOCK



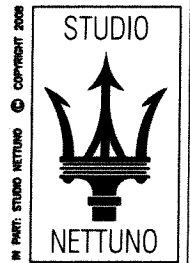
1 FRONT ELEVATION  
 SCALE @ 1/4"=1'-0"

31'-0" TOP OF RIDGE  
 21'-8" 2ND FL. CL.HT.  
 8'-0" AFF WINDOW HOR.  
 12'-8" 2ND FL. HD.  
 10'-0" TOP PLATE  
 8'-0" AFF WINDOW HOR.  
 0'-0" TOP OF BLOCK



2 RIGHT ELEVATION  
 SCALE @ 1/4"=1'-0"

*[Handwritten signature]*  
 5-12-11



BART MILLER  
 SANTA ROSA BEACH, FLORIDA  
 PH 850 428 1002 FAX 850 287 3118

Gulf Coast Engineering  
 Commercial and Residential Design  
 P.O. Box 4815 Fort Walton Beach, Florida 32549  
 ellent1@cox.net Elliot Allen, PE FL Reg No 42137  
 mdnewell@cox.net Michael Newell, PE FL Reg No 41126  
 Call 850-865-0888 FL CA# 7096

DATE: \_\_\_\_\_ REVISION DATE: \_\_\_\_\_  
 DESIGNED BY: BART MILLER  
 DRAWN BY: BART MILLER  
 CHECKED BY: GCE

LOT 76 - HUFF  
 PATHWAYS  
 SANTA ROSA BEACH, FLORIDA

SHEET NO.  
 A4

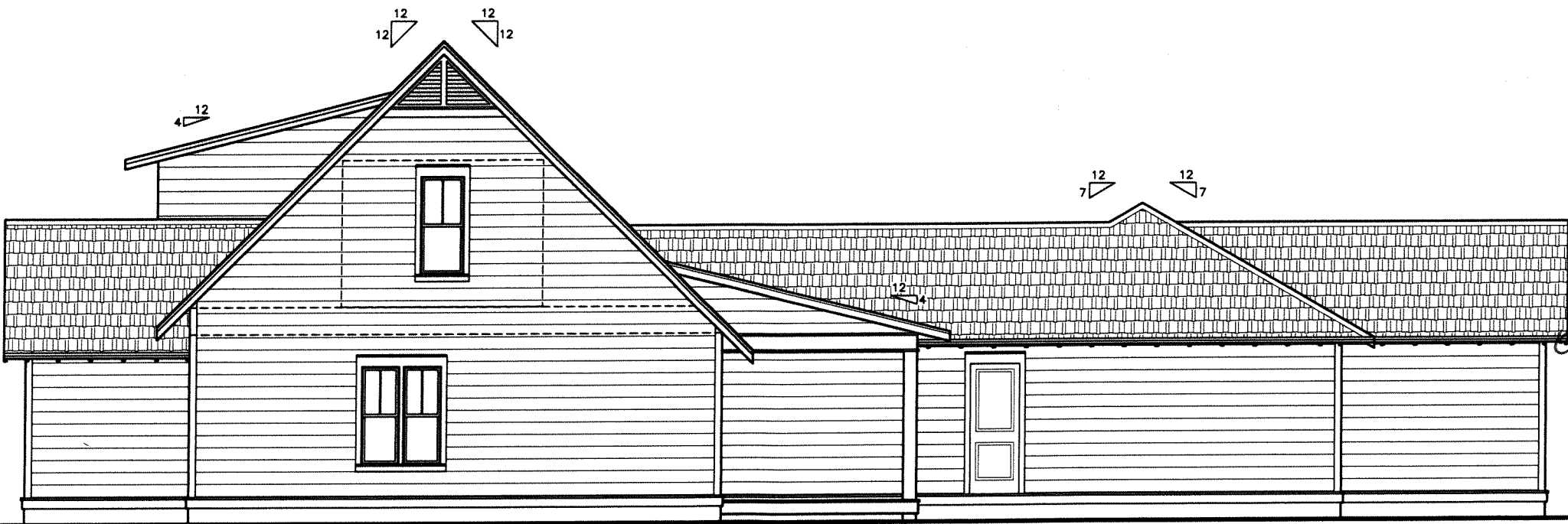
PROPRIETARY RIGHTS CLAIMED. INFORMATION AND DATA CONTAINED ON THIS DRAWING IS CONFIDENTIAL AND SHALL NOT BE USED WITHOUT PRIOR WRITTEN PERMISSION BY ANY ENTITY. NOT BEING A CONTRACTUAL RELATIONSHIP WITH THE DESIGNER, THIS LEGEND SHALL BE MARKED ON ANY REPRODUCTIONS IN WHOLE OR IN PART. STUDIO NETTUNO © COPYRIGHT 2008

31'-0" TOP OF RIDGE  
 20'-8" 2ND FL. CLG.HT.  
 8'-0" WINDOW HDR.  
 11'-6" 2ND FL. HD.  
 8'-0" TOP PLATE  
 8'-0" WINDOW HDR.  
 0'-0" TOP OF BLOCK



1 REAR ELEVATION  
 SCALE @ 1/4"=1'-0"

31'-0" TOP OF RIDGE  
 20'-8" 2ND FL. CLG.HT.  
 8'-0" WINDOW HDR.  
 11'-6" 2ND FL. HD.  
 8'-0" TOP PLATE  
 8'-0" WINDOW HDR.  
 0'-0" TOP OF BLOCK



2 RIGHT ELEVATION  
 SCALE @ 1/4"=1'-0"

*Handwritten signature*

5-12-04

PROPRIETARY RIGHTS CLAUSE: INFORMATION AND DATA CONTAINED ON THIS DRAWING IS CONFIDENTIAL AND SHALL NOT BE USED WITHOUT PRIOR WRITTEN PERMISSION BY ANY ENTITY NOT HAVING A CONTRACTUAL RELATIONSHIP WITH THE DESIGNER. THIS LEGEND SHALL BE MARKED ON ANY REPRODUCTIONS IN WHOLE OR IN PART: STUDIO NETTUNO © COPYRIGHT 2008

STUDIO  
 NETTUNO

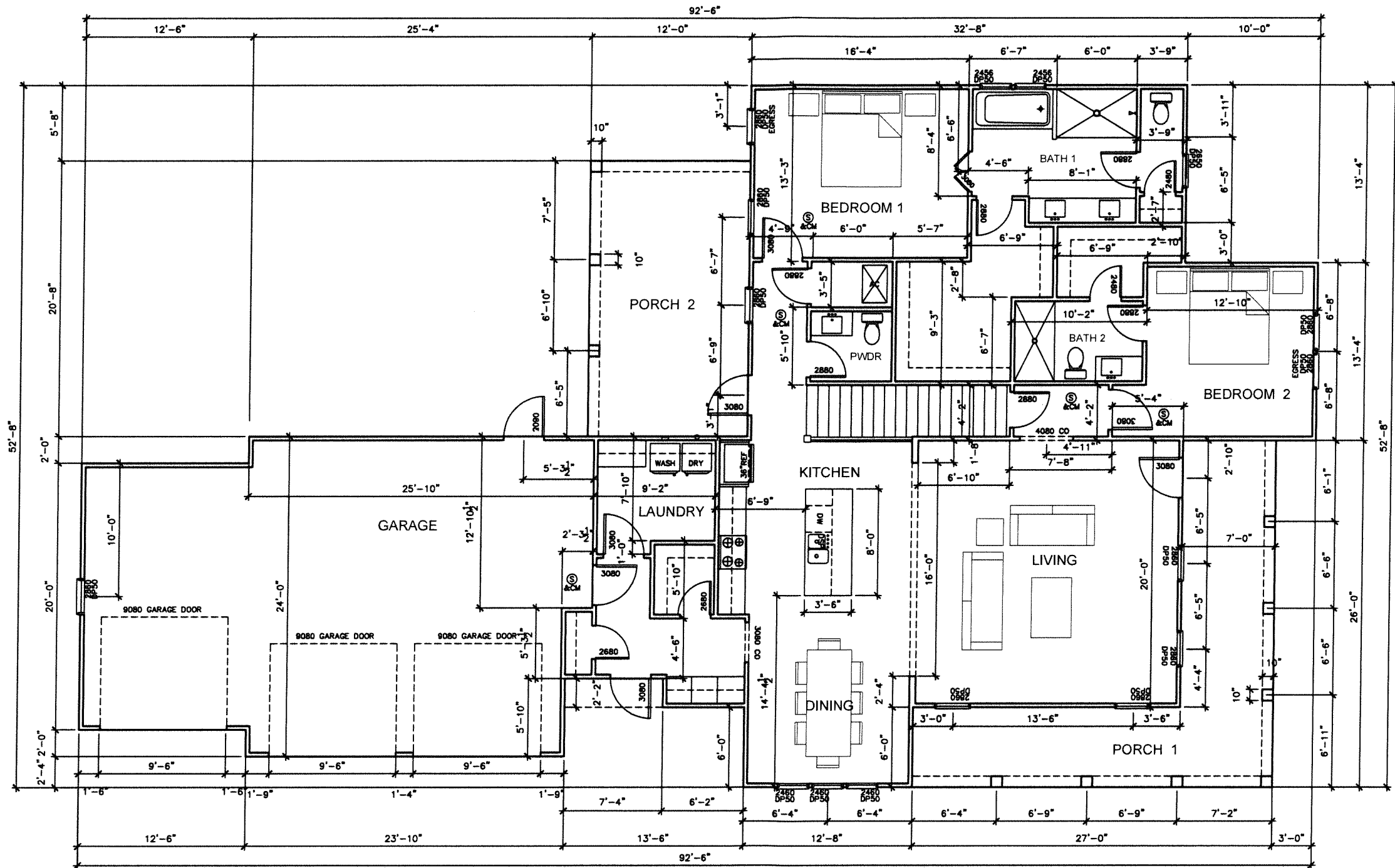
BART MILLER  
 SANTA ROSA BEACH, FLORIDA  
 PH: 904-282-1002 FAX: 904-282-3118

Gulf Coast Engineering  
 Commercial and Residential Design  
 P.O. Box 4915 Fort Walton Beach, Florida 32549  
 eallen18@cox.net Elliott Allen, PE FL Reg No 42137  
 mfinewell@cox.net Michael Newell, PE FL Reg No 41126  
 Call 904-865-8888 FL CA# 7096

DATE: \_\_\_\_\_ REVISION DATE: \_\_\_\_\_  
 DESIGNED BY: BART MILLER  
 DRAWN BY: BART MILLER  
 CHECKED BY: GCE

LOT 76 - HUFF  
 PATHWAYS  
 SANTA ROSA BEACH, FLORIDA

SHEET NO.  
 A5



1 FIRST FLOOR PLAN  
SCALE: 1/4"=1'-0"

*[Handwritten Signature]*

5-12-11

PROPRIETARY RIGHTS CLAUSE: INFORMATION AND DATA CONTAINED ON THIS DRAWING IS CONFIDENTIAL AND SHALL NOT BE USED WITHOUT PRIOR WRITTEN PERMISSION BY ANY ENTITY NOT HAVING A CONTRACTUAL RELATIONSHIP WITH THE DESIGNER. THIS LEGEND SHALL BE MARKED ON ANY REPRODUCTIONS IN WHOLE OR IN PART. STUDIO NETTUNO © COPYRIGHT 2008

**LOT 76 - HUFF PATHWAYS**

SANTA ROSA BEACH, FLORIDA

SHEET NO.  
**A2**

DATE: \_\_\_\_\_ REVISION DATE: \_\_\_\_\_

DESIGNED BY: **BART MILLER**

DRAWN BY: **BART MILLER**

CHECKED BY: **GCE**

**STUDIO NETTUNO**

**BART MILLER**

SANTA ROSA BEACH, FLORIDA

PH: 850-428-1002 FAX: 850-267-3118

**Gulf Coast Engineering**

Commercial and Residential Design

P.O. Box 4015 East Palmetto Beach, Florida 32909

edl@19@cox.net Elinor Allen, P.E. FL Reg. No. 42137

mrdrew@cox.net Michael Newell, P.E. FL Reg. No. 41126

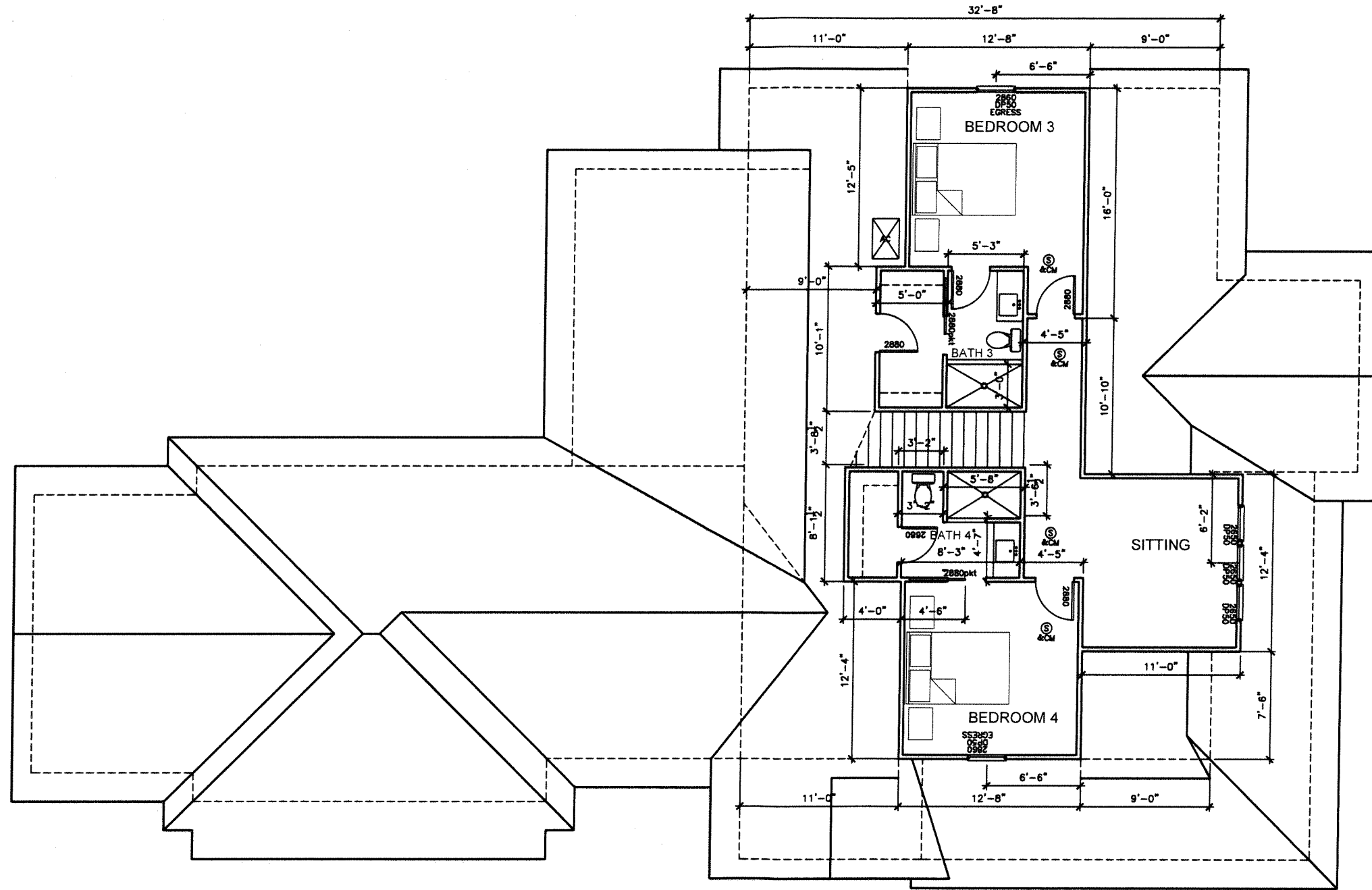
Call 850-965-0998 FL C.# 7096

**STUDIO NETTUNO**

**BART MILLER**

SANTA ROSA BEACH, FLORIDA

PH: 850-428-1002 FAX: 850-267-3118



① SECOND FLOOR PLAN  
SCALE: 1/4"=1'-0"

*[Handwritten Signature]*  
5-12-11

PROPRIETARY RIGHTS CLAUSE: INFORMATION AND DATA CONTAINED ON THIS DRAWING IS CONFIDENTIAL AND SHALL NOT BE USED WITHOUT PRIOR WRITTEN PERMISSION BY ANY ENTITY. NOT BEING A CONTRACTUAL RELATIONSHIP WITH THE DESIGNER, THIS LEGEND SHALL BE MARKED ON ANY REPRODUCTIONS IN WHOLE OR IN PART. STUDIO NETTUNO © COPYRIGHT 2008

DATE: \_\_\_\_\_ REVISION DATE: \_\_\_\_\_  
 DESIGNED BY: BART MILLER  
 DRAWN BY: BART MILLER  
 CHECKED BY: GCE

STUDIO  
  
 NETTUNO

---

LOT 76 - HUFF  
 PATHWAYS  
 SANTA ROSA BEACH, FLORIDA

BART MILLER  
 SANTA ROSA BEACH, FLORIDA  
 PH: 850-628-1002 FAX: 850-267-3118

---

Guif Coast Engineering  
 Commercial and Residential Design  
 P.O. Box 4915 Fort Walton Beach, Florida 32549  
 edallen18@cox.net Elliott Allen, PE, FL Reg No. 42137  
 mdmiller@cox.net Michael Newell, PE, FL Reg No. 41126  
 Cell: 850-865-0988

SHEET NO.  
**A3**