

Gardenia

WaterSOUND[®]
ORIGINS

PATHWAYS

By Huff Homes

4 Bedrooms ■ 3.5 Baths ■ 2,615 Sq Ft Conditioned
471 Sq Ft Combined Porches ■ 2-Car Garage

watersound.com

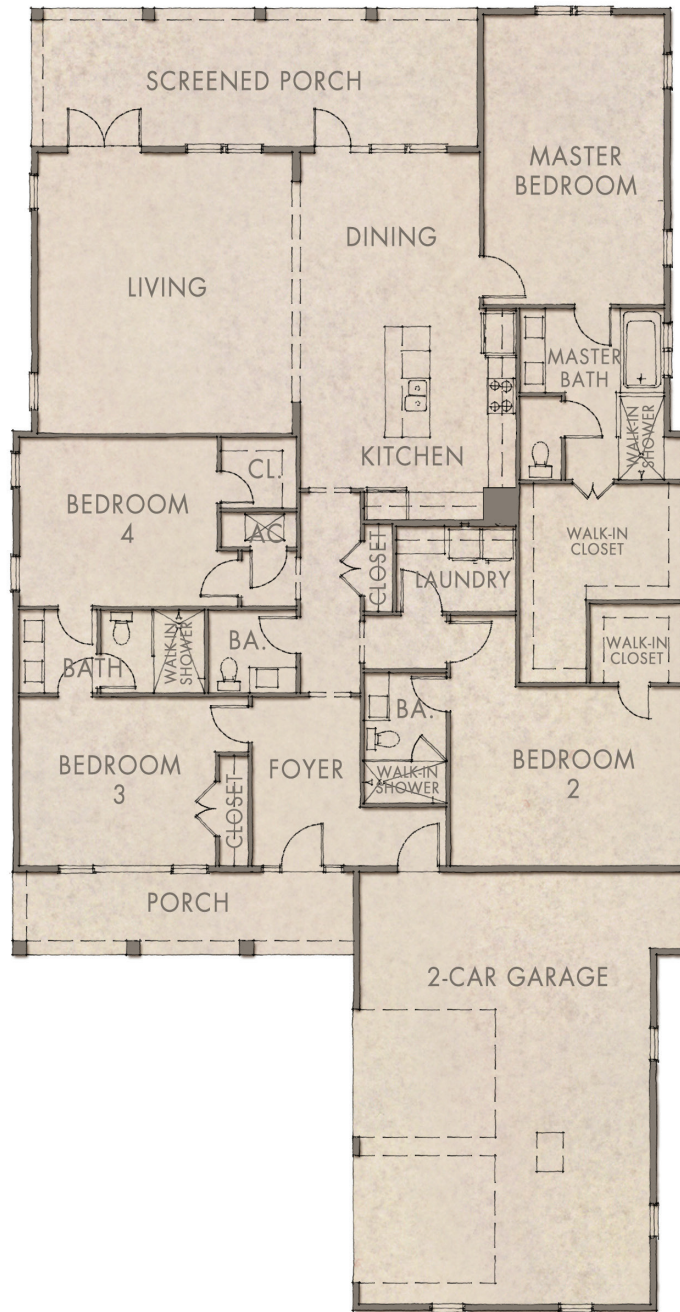
1.866.505.2091



FRONT VIEW



REAR VIEW



GARDENIA **WATERSOUND.COM**

- 2,615 Sq Ft Conditioned
- 471 Sq Ft Combined Porches
- **2-Car Garage:** 21' x 17'6"
- **Living Room:** 20' x 18'
- **Dining Room:** 10' x 13'
- **Master Bedroom:** 21' x 13'
- **Bedroom 2:** 16.5' x 12.5'
- **Bedroom 3:** 14' x 12'
- **Bedroom 4:** 14' x 12'



Equal Housing Opportunity
 "Watersound Origins" and its logo are service marks of The St. Joe Company. The materials and features and amenities described and depicted herein are based upon current development plans, which are subject to change without notice. Room dimensions and square footages are approximations. This does not constitute an offer to sell real property in any jurisdiction where prior registration or other advance qualifications of real property is required, including New York. Void where prohibited by law. Equal Housing Opportunity. St. Joe Club & Resorts is a private club, membership in which permits Watersound Origins owners the use of facilities designated by the Club. Use of additional Club Facilities requires purchase of a separate membership upgrade. Club membership may be subject to application and acceptance, payment of fees, membership requirements, rules or other limitations, all of which are subject to change. Club Facilities are also available to other club members and persons who stay in rental program residences. Huff Development, LLC., is an independent, third party not affiliated with The St. Joe Company. The St. Joe Company does not guarantee the obligations of, nor provide any warranties for unaffiliated parties who build homes in the Watersound Origins community.